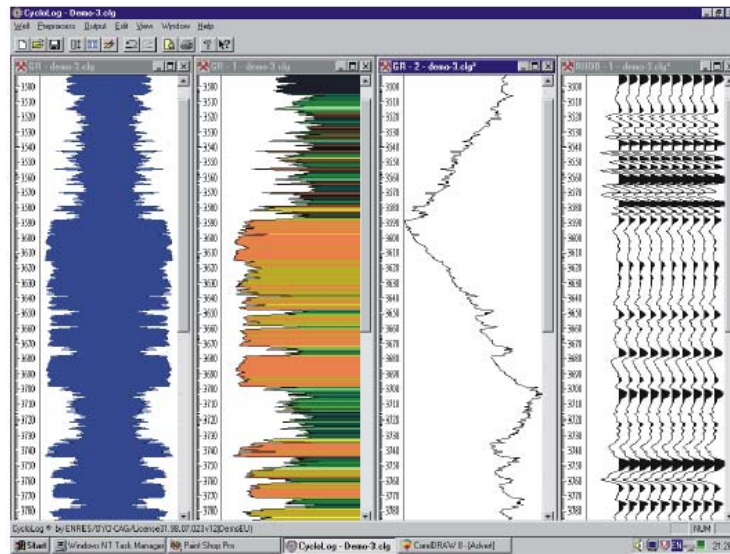


PETEX 2002 – Olympia, London



Enres Cyclog – seismic processing on well logs

PETEX the Petroleum Exploration Society of Great Britain’s two-yearly conference and exhibition moved this year from the Design Center in north London to larger premises in the Olympia complex. This, the weather (the coldest week this millennium) and the state of the industry all had an adverse effect on PETEX . The ‘buzz’ of previous editions was gone. While there were 1300 pre registered, only 175 came from oil companies. We feel that the PESGB has gone a little too far in the direction of the big trade shows. It is hard to see why the cost of entry should have risen so spectacularly – this must have discouraged many.

That said, there was plenty to see at the exhibition, with several start-ups or re-entrants to upstream E&P software. Highlights include

[Space2Face demo from BP HIVE](#)

[WalkInside VR from CAD drawings](#)

[Geologix streaming log technology,](#)

[Enres’ patented Cyclog cyclo-stratigraphic tool,](#)

[Centra \(ex-Autotrol\) with its upstream document management system](#) and

[Conwy Valley’s digital stepping microscope.](#)

There were also new major releases of [PGL’s Oilfield Data Manager](#) and [Robertson’s Target](#) play fairway and failure analysis software. Finally, not exactly new, but somehow it slipped under our radar, is [Trax](#) – a productization of Robertson’s data and physical asset management service.

In this Technology Watch report – we indicate new developments in dark blue text.

Contents

Badleys – Unite IT – E&P knowledge sharing.....3
Baker Hughes – Recall on Windows and RecallML spec.....3
BeicipFranlab – new Temis 3D basin modeling3
British Geological Survey – DEAL to become DTI data source.....4
Cambrian In:Toto – new wellsite geology database.....4
Centra 2000 E&P document management system5
Conwy Valley Systems petrography and stepping stage microscope.....5
Data by Design – the digital ‘Brown Book’.....6
Deloitte and Touche Petroleum Services On-call.....6
Earth Decision Sciences geostatistical property modeling.....7
Enres International cyclo stratigraphy software7
GeoCenter – SeisUP8
GeoFocus Pathways migration analysis8
GeoLogix streaming log data over internet9
Geophysical Books – online bookstore9
Ikon Geoscience9
Neuralog NeuraSection map digitizing10
PGS research Holoseis VR-based seismic visualization10
Platt River Associates – Wedgwood Project – basin modeling.....11
Production Geoscience Ltd. (PGL) Oilfield Data Manager V2.012
Q-Associates system integrator to BP12
Q-Venture Development – Q-Fault12
Roberston – Failure analysis with Target.....13
Robertson productizes data management in Trax.....13
Rock Deformation Research.....13
Scott Pickford/Corelab the world’s smallest Linux cluster!.....13
SGI demos BP Hive applications14
TEEC Common Reflection Surface processing15
Troika – new tape reading software.15
VR Context’s WalkInside 3D visualization15
Papers16
 Keynote address – BP’s role in creating a new future for the U.K. North Sea.....16
 Bridging the new technology implementation gap16
 Shell’s MRH spatial data warehouse16
 Global chronostratigraphic website Sikor et al University of Utah16
 GoFault estimation of sealing potential. Green et al TotalFinaElf16
 Altinex NetTool - A new approach to advanced well planning A.Isaj17