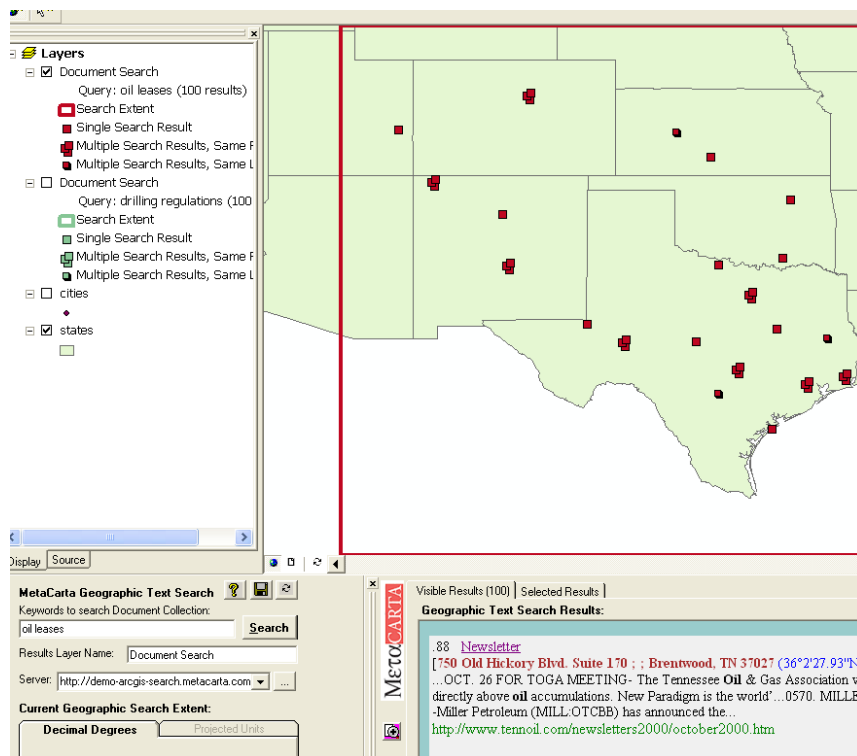


2003 ESRI Petroleum User Group 10th - 12th March 2003 – Houston



MetaCarta – from text to GIS and back again! – courtesy [MetaCarta](#)

Introduction

The 2003 ESRI Petroleum Users Group (PUG) was well attended - around 600 signed up for the Houston meet. ESRI's Geographical Information Systems (GIS) dominate upstream software and are making inroads into the midstream segment. The PUG steering committee includes representatives from five super majors and the main software vendors. This year, the PUG was graced by ESRI founder and President Jack Dangermond whose keynote address ranged from ESRI's successes with the US military and homeland security to a litany of oil and gas specific deployments. But Dangermond's favorite pitch is to the development community – and here there is something for everybody. ESRI software is migrating to componentized **web-services** infrastructure and is being offered in three flavors. For the Microsoft crowd – the **.NET** environment is king. For the **Sun/Java** brigade another spectrum of services is on offer – but interestingly for a major tool vendor, ESRI also supports 'generic' **open source** web services. ESRI functionality is leaping (not creeping) into new spatial domains with network topology **schematics**, **geoprocessing** and 3D – particularly with the spectacular [ArcGlobe](#). Our star of the show award however, goes to a third party product [MetaCarta](#) which intelligently couples GIS and text search. [ArcView-ArcGIS](#) migration is a hot topic. **GIS data integration** is a popular route to datavisualization with a plethora of offerings from [PetroWeb](#), [R7 Solutions](#), [Exprodat](#) etc. [IHS Energy](#) made a particularly insightful presentation describing a novel deployment of the Open Source MySQL database. Company presentations from [Shell](#) and [ConocoPhillips Alaska](#) described major corporate GIS deployments, while [ExxonMobil](#) warned of weakness in the way GIS software exposes datum transformations. On the vendor front, pipeline software is moving beyond the all-purpose alignment sheet to occupy niches such as [Tuboscope](#)'s pig inspection GIS, [PBSJ](#)'s corridor constraint analysis and others.

Contents

Introduction	1
Introduction – Charles Fried, BP Amoco	3
Keynote Address – Jack Dangermond, president and CEO ESRI	3
ArcGlobe 3D GIS	4
ESRI product line – an introduction	4
Desktop/Web	5
Server/Infrastructure	5
ESRI Technology review and plans – Clint Brown	5
Geoprocessing – John Caulkin, ESRI	6
Map Objects for Java	6
ArcGIS Pipeline Data Model	6
ArcView-ArcGIS migration – John Lineham, Occidental	7
CAD – GIS Integration – Bryan Stoltenberg, Blue Sky Development	7
Enterprise GIS at ConocoPhillips Alaska – Karl Fleischmann	7
GIS – the ‘Moulinex’ of E&P – Gareth Smith, Exprodat Consulting	8
IHS Web Services and tuning workshop – Tor Nielsen, IHS Energy	9
IHS Open Source deployment	11
Landmark’s Arc 8 migration, life after ArcView – Robert Warford, Landmark	11
Leveraging GIS with Web Services – James Maupin, Schlumberger Information Solutions	12
PPDM Spatial Project – Ian Batty, PPDM Association	13
Shell Spatial Database – Con Goedman, Shell International E&P	14
The PUG Wish list – a.k.a. “The List”	14
Arc8 does not support ‘push’ installation (e.g. Microsoft System Management Server SMS)	14
Arc9 will drop CGM support	14
One to many table joins in ArcGIS	14
Cannot edit a geometric network in a projected ArcMap	14
Datum information not exposed as required for transformations and QC	15
Web enabled enterprise GIS – Joe KostECKa (Marathon) and Darcy Vaughn (PetroWeb)	15
What makes coordinates unique? Richard Wylde, ExxonMobil	15
Exhibitors	15
Baker Engineering accident and incident management	15
GeoFields FacilityExplorer – GIS to SAP interface	17
Idea Integration – multi-database GIS integration	17
James W. Sewall Co. QTools GIS data QC	17
LandWorks – the Landman’s Toolbox	17
LogicaCMG – Shell’s KID shrink-wrapped	18
MetaCarta – from text to GIS and back again	19
Paradigm – community awareness program	19
PBSJ – corridor constraints analysis	19
PetroWeb – The GIS ‘blender’	20
R7 Solutions P2000 – Finder GIS integration	21
Schlumberger – GIS browsing with ProSource	22
Tobin Vendor Data Index	23
Tuboscope – pipeline integrity mapping	24
Notes	24