



# TIGRESS NEWS & VIEWS

## Tigress PC Edition gets a warm welcome in Commonwealth of Independent States

### Inside this issue:

Tigress 4.6.3 features	2
New documentation	3
ISA map browser	4
DROPS Technology	4
Tigress events calendar	4

### New office in China

In Spring this year Tigress established a local support unit in the PGS office in Beijing. In addition to providing support the office also has responsibility for promoting Tigress products in China and the surrounding regions.

The Tigress PC Edition in particular has been warmly received by the Chinese market.

For further details and enquires contact :

**Wei Huang**  
Tel: +86 10 6465 1675.  
Email: wei.huang@pgs.com

**2002 has seen a flurry of Tigress activity in the CIS with the rollout of the Tigress PC Edition. Feedback from our clients indicates that 80% of all CIS Tigress licences will be running on this new platform by the end of the year.**

*Sibnac*, one of Tigress' original partners in the Russian Federation have entered into a three-year corporate licence deal for *Tigress PC Edition*. Sibnac, founder members of the ground-breaking *Western Siberia Study Centre* will shortly move to brand new purpose-built accommodation in the centre of Tyumen. Support for the new project will continue to be provided by Tigress' Tyumen office. Tigress is delighted to be part of the Sibnac success story.

Tigress is also extending its long-standing partnership with Moscow's *Central Geophysical Expedition (CGE)*. Agreement was reached late last year whereby CGE's innovative *DV* interpretation system will be integrated with the Tigress product line. Work has now begun with the first release of the new product expected in quarter three. CGE are also a major Tigress user with 15 concurrent licences available at their Moscow centre.

Tigress is also especially pleased to welcome *Gaspromgeofisika* to the fast growing Russian PC Edition user community following a successful pilot study in the Moscow region.

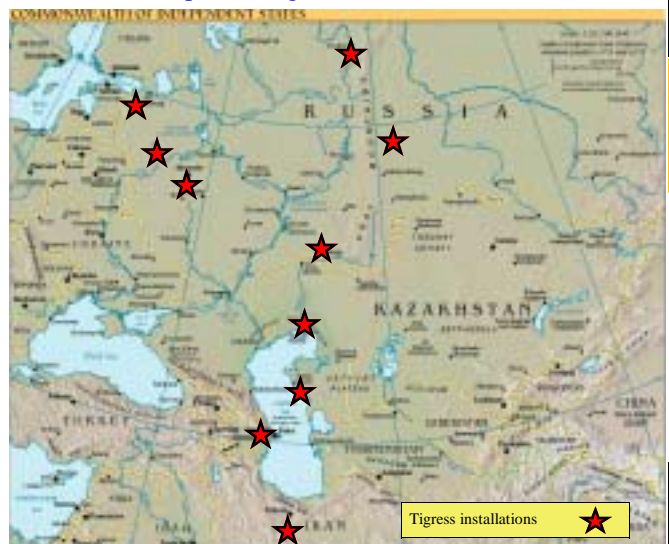
Tigress was also recently installed in Moscow's *INPG*

institute where it will be used as a research tool. A number of joint Tigress/INPG projects are envisaged.

In Saint Petersburg we welcome *Servmorgeo* to the PC Edition community, while in Tver, *Slavneft* have recently commenced a new interpretation project assisted by Andrei and his team. Slavneft Tver join existing Rhadusny-based Slavneft group member *Varyeganeftegas*.

Back in Moscow, Tigress has entered into an agreement with the *Ministry of Natural Resources* who will work with the Tigress team on the definition and development of interpretation practice using Tigress PC Edition.

Tigress' continuing success in the Russian market has led us to expand our User Group activities beyond the traditional annual Moscow meeting. The 2002 programme will include additional events in Tyumen & Yuzhno Sakhhalinsk hosted by local Tigress customer **DMNGR**. For details of these and all other Tigress User Group Events please mail: [helpdesk@tigress.co.uk](mailto:helpdesk@tigress.co.uk)





## 4.6.3

## More flexibility for well template selection

The June release of Tigress 4.6.3 brings a major extension to the template functionality, widely used for loading log data in Well Correlation and Log Plot. There is a big increase the number of ways the user can specify and search for data to be loaded.

The template can now be configured to search through specific well logs, interpreted sets, or core sets as appropriate. The search can be an exact text match, or use wildcards. In addition there is a **Browse** button to help the user view the entries in the database before making a selection.

One or more alternative well logs can be specified, in case the required data is not found in the initial named well log selection. These alternate selections can be defined globally or on a trace-by trace basis.

At the trace level, the user can now optionally specify edited/non-edited, merged/non-merged and (for porosity and saturation traces) effective/total trace types. This is in

addition to the standard trace status selection options. Two new settings **Any** and **Highest** have also been added. The 'Highest' selection will choose the trace with the highest status based on the order RAW,DM,BHC, ENVC, and INT, where RAW is the lowest and INT the highest.

The option of specifying an alternate name has been extended to the trace level, if the desired trace is not found. Each alternate trace can have its own scale, appearance and wrap settings. The main and alternate traces do not need to belong to the same well log or interpreted set. For example, the user could specify a core porosity trace as the main trace and a RHOB well log trace as an alternate trace to be used in wells where the core trace is not available.

Finally you can now read and write templates to external files in XML format, so that key templates can now be moved to different projects and different sites easily!

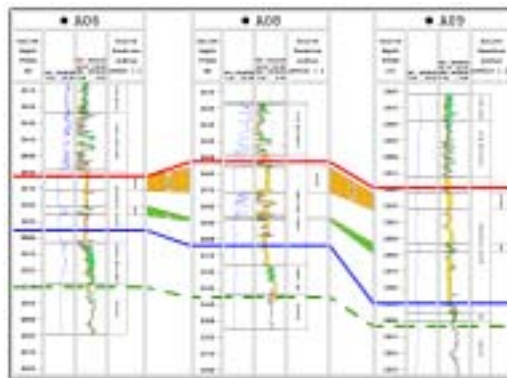
Tigress 4.6.3 is the second upgrade of the code in 2002. 180 fixes & improvements!

## 4.6.3

## Enhancements to depth markers in correlation panels

The depth marker functionality has been significantly extended to allow depth markers to extend across all tracks in a well and across all wells in a panel.

The new settings are: Current Track, Trace Tracks, All Tracks, Current Well, All Wells, All Wells and Correlations. There are also new options to select the colour, line style, line width, track placement and well placement. A depth marker can be quickly edited by clicking on it and any annotation is now scaled to fit within the track.



## 4.6.3

## Simplified database connectivity — The PDS Locator

**PDS Locator is a new Tigress application that allows you to search for Tigress projects on the network, and set up access to them for other PDS applications.**

This application is especially useful for users who are running Tigress PDS applications on a Linux laptop computer, where they may often want to move the laptop between various sites and networks. These users will now find it much easier to locate and access other Tigress databases on the network. This new application includes enhanced security features for the PDS which means that it will only find projects on Tigress PDS

systems which have been configured to respond to global project queries. By default, pre- and post-2.4.2 Tigress PDS systems do not respond to these queries. The system administrator can set up Tigress PDS systems to respond only to specific machines (based on the host ID), or to any machine, by using new arguments in the **tigenv** and **envsvr** utilities.

For details on this new application, see *PDS Locator* in the *Tigress PDS Utilities User Guide* (version 4.6.3 of the Tigress on-line manuals).

## What is new in the Tigress documentation?

As of Tigress 4.6.2, the Tigress on-line manuals have been distributed as PDF (Portable Document Format) files instead of the previous FrameViewer files. The main reason for doing this is for cross-platform support. The Adobe Acrobat Reader application used for viewing PDF files is free and widely available for a variety of platforms, including the latest platform of choice for Tigress users - Linux.

There are other benefits in migrating to PDF. The PDF format has become the defacto standard for publishing long content-rich documents on-line, and its viewing engine - Acrobat Reader - is now embedded in most web browsers, allowing you to use a web browser to view the Tigress manuals.

them for the PDF version, and I think our readers will be, too."

The new format also uses a simplified file structure. Each manual consists of a single self-contained PDF file, with no external graphics files. Even the fonts used in the PDF files are embedded in the PDF files themselves, so no extra configuration is required to view the Russian version of the manuals - just open the PDF file and look.

To take cross-platform compatibility still further, the Tigress Documentation CD now contains files in directly readable form, instead of compressed UNIX tar files. You can use Acrobat Reader on any platform to view the manuals directly on the CD, without having to install them first. In fact, if you

have Acrobat Reader installed on a Windows machine, inserting the Tigress Documentation CD will auto start Acrobat Reader and display the manuals on the screen. Dave Hayes says, "Some of our users wanted to browse the Tigress documentation on Windows, even though Tigress itself runs on UNIX and Linux. We've given them that ability to do that instantly, without taking up disk space."



The biggest challenge for the documentation team was to implement the PDF version with no loss of features. Dave Hayes, the senior technical author at PGS Tigress, says "I wanted to keep all the existing navigational features and document links, especially the split-level contents and our beloved column of navigational buttons. These have been hallmarks of the Tigress manuals since we first put them on-line back in 1996, and are crucial for finding your way around large manuals. I'm pleased we were able to retain

According to Dave, the only drawback to the PDF manuals is the time it takes to generate them. "Once all the FrameMaker source files are in place, I execute a script that takes only a view seconds to launch, but 21 solid hours of machine time to run. However, when you consider that it is generating the PDF files involving about 50 manuals, 12,000 pages, and 150,000 hypertext links, in both English and Russian, I guess I shouldn't complain." Indeed.



### Tigress 4.6.2 documentation features

- Tigress documentation Now available as PDF files
- PDF viewers are widely available for all major platforms—PC and Unix based

12,000 pages,  
150,000  
hypertext  
links — in  
both English  
& Russian

- Embedded fonts
- Simplified printing options via the PDF viewer interface
- May be read directly from the CD—no installation necessary



## New additions to the PDS

Over the summer two major additions to the PDS will become available to Tigress users. Both these products are already in use commercially and this is an opportunity for Tigress users to introduce GIS and engineering aspects to their existing Tigress workflow.



**GeoBrowse is a map-based data management and query tool developed by ISA Ltd. in Australia.** GeoBrowse connects to industry databases and standard data formats creating a

single, virtual database environment. It enables the browsing and display of geographic data from disparate, non-connected databases via a map display. GeoBrowse also enables referencing of non-spatial data to any geographical element. In other words, from the map view queries can be made to obtain information that is not co-ordinate based. This information can be linked to a well name, a permit, a basin or seismic survey — any object on the map—letting the user query directly from the map. The results can be displayed in tabular form, or sent to application windows.

The map views can combine data elements from different databases, and GeoBrowse already has active links to several of the common industry databases. It is these aspects of map-based data selection (cross-database), combined with automatic transfer to editing and viewing applications that Tigress are developing in conjunction with ISA. Look out for demonstrations of the new interface later this summer—the new ARC info GIS browser will be available as an additional Tigress module.



**DROPS is a Drilling Optimisation Simulator, developed by the Norwegian company, Drops Technology AS.** The idea behind the product is to simulate the drilling operation prior

to the actual event, to determine the optimum drilling approach, and thus reduce operation costs. Drops uses existing drilling data (ROP, lithology type, bits' hydraulics etc.) to generate an apparent rock strength log (ARSL). This log is then used in the drilling simulations to provide a guide to optimising the drilling strategy for the well, in terms of drill bit type, hydraulics, and general drilling parameters. Using such an approach it is possible to optimise the drilling program and forecast bit wear, and expected ROPs and thus effectively plan the bit trips to keep rig down-time to a minimum.

Tigress will be adding a data transfer link for DROPS data, as an extension of the existing import/export system (TIES). In addition to the obvious advantage this gives DROPS users in terms of secure and accessible storage of valuable data, all users will now be able to use the existing Tigress applications to view, edit and combine more engineering and geological data in the same applications. Work on this is already underway, and will be made available to the user base in the autumn.

### EVENTS CALANDER

- Tigress 4.6.3 release date: June 2002
- Tigress News & Views—Issue 10: September 2002
- Tigress User event—Milan: October 2002
- Tigress User event—Moscow: November 2002

*The current release version of Tigress is 4.6.3*

### To contact us:

PGS Tigress (UK) Limited  
Thames House  
17 Marlow Road  
Maidenhead  
Berkshire SL6 7AA  
England

**London Beijing Tyumen**

+44 (0)1628 587 000 +86 10 6465 1675 +7 3452 494 234  
helpdesk@tigress.co.uk